



# WYNYARD PLACE

## COMMUNITY UPDATE – April 2018

**Works for Wynyard Place will continue throughout April, with the following underway:**

### **Construction activities**

- Investigation of the heritage faience façade will continue through the month with the clock tower load transfer complete.
- Structural demolition of the existing Shell House internal structure has commenced.
- Concrete foundations in the basement have been completed.
- The structure that forms the new transit hall between Wynyard Station and George Street is well under way and will continue to progress in the next few months.
- The structure that will accommodate the new lifts in the transit hall will continue throughout the month. This structure is referred to as the northern buttress walls.

### **Pedestrian and vehicle pathway changes**

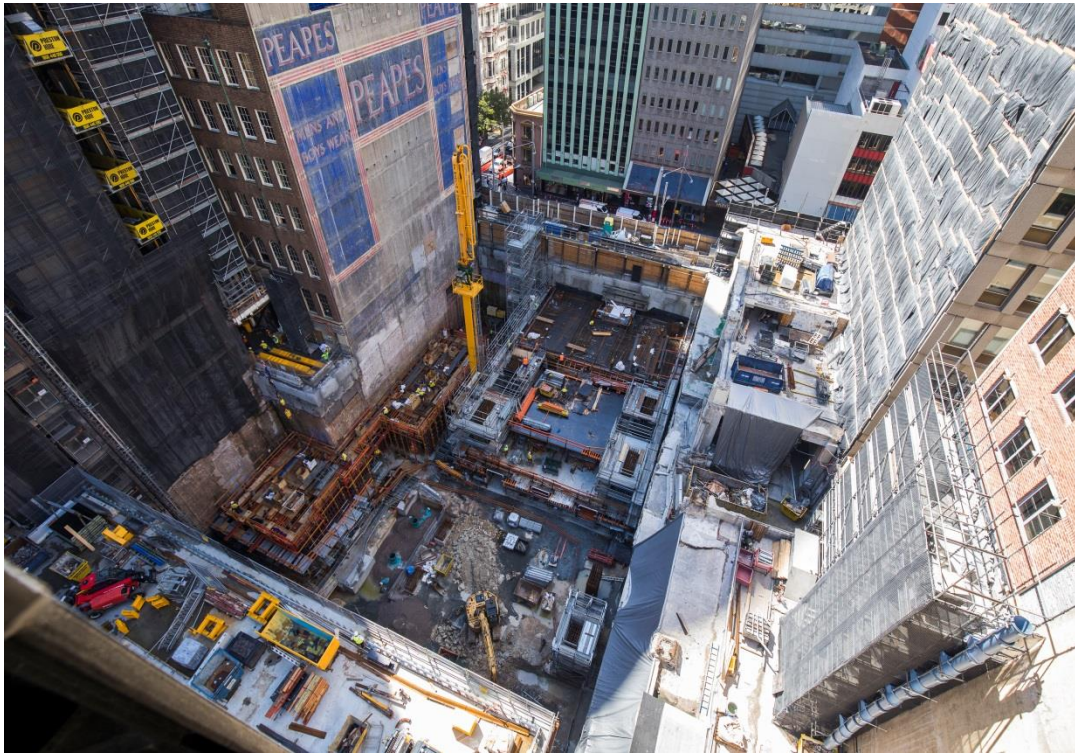
- Pedestrian access to the concourse in and around Wynyard Station and the Hunter Connection will remain unchanged this month.
- Vehicular crossing of the footpath on Carrington Street to access the site will continue throughout April. New traffic and pedestrian controls have been implemented to manage pedestrian safety.
- Margaret Street work-zone is operational from 7.00am to 7.00pm Monday to Friday and 7.00am to 5.00pm on Saturdays.
- Hours of use of the Carrington Street construction zone are 7:00am to 7:00pm Monday to Friday, but remain unchanged on Saturdays (7.00am to 5.00pm). The work zone reverts back to a taxi rank outside of these hours. Access for non-construction vehicles from the southern end of Wynyard Lane will be maintained throughout the project.

### **CONTACT US**

For more information or to ask questions about the construction of Wynyard Place, please:  
**Call** 1800 907 203 **Email** [wynyardplace@multiplex.global](mailto:wynyardplace@multiplex.global) **Visit** [buildingwynyardplace.com](http://buildingwynyardplace.com)



# WYNYARD PLACE



**New Transit Hall Structure**



**Shell House – Load transfer of Clock Tower.**